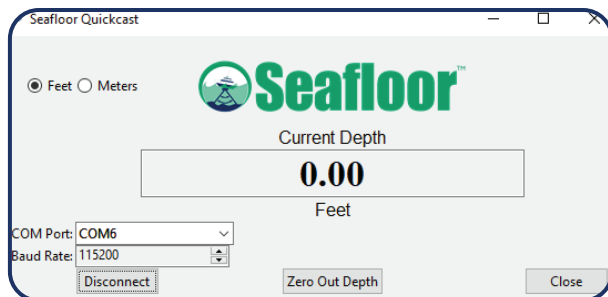
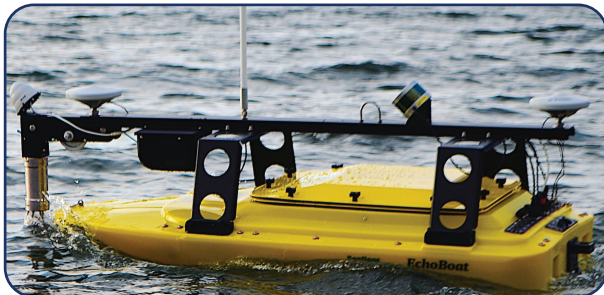




Winch comes spooled with 30m of rope



Counter can be easily reset to zero



QuickCast Winch with Valeport SWiFT SVP mounted on EchoBoat USV



QuickCast Components

**Seafloor Systems, Incorporated**  
4415 Commodity Way  
Shingle Springs, CA 95682 | USA

The **QuickCast** system was designed to allow for the manual deployment of a sound velocity profiler using the USV's remote control. The winch can be mounted onto the front of the USV, and uses a pulley wheel to deploy the SVP. The encoder is IP69K and can accommodate changing conditions. It is viewed on the onboard PC via integrated Seafloor software, and can change from meters to feet with a push of a button.

The winch comes spooled with enough rope to reach 30 m and has been tested to give a margin of error of only 0.5% (15 cm) at max depth. While it can let out up to 1.5 m/s of line, it is recommended that payout speed is kept at around 30 cm/s to ensure a vertical, controlled cast and prevent tangling of the line. Once the SVP resurfaces, data can be communicated to your PC or phone via bluetooth. The winch is compatible with most sound velocity profilers. For best results and proven compatability, Seafloor recommends the Valeport SWiFT SVP..

## SPECIFICATIONS

Max Length/ Depth : 30 m

Max Speed: Up to 1.5 m/s

Recommended Speed: 30 cm/s

Counter Accuracy: 0.10 cm

Max Payload: 10 kg

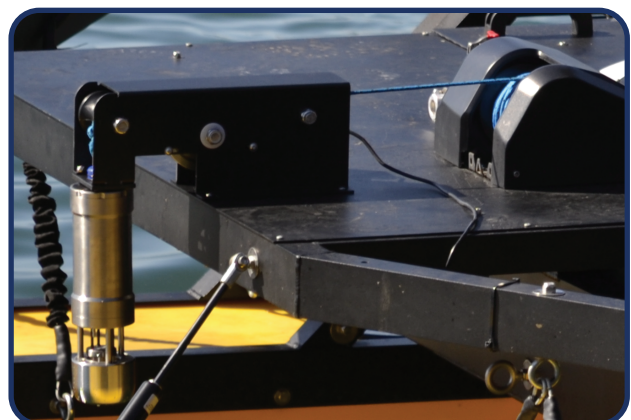
## SENSORS

► Sound Velocity Profilers

► CTD Profilers

► Multi- Parameter Systems

► Water Sampling Sensors



Valeport SWiFT SVP mounted on QuickCast System