



SHALLOW SURVEY EFFICIENCY & QUALITY
FOR COMMERCIAL, SCIENTIFIC & MILITARY NEEDS

BATHYSWATH 1

BATHYMETRIC & SEABED MAPPING SONAR SYSTEM

bathyswath.com
sales@bathyswath.com
support@bathyswath.com



HIGH-DENSITY BATHYMETRY & SIDESCAN SEAFLOOR IMAGERY DATA ACROSS A VERY WIDE SWATH WIDTH

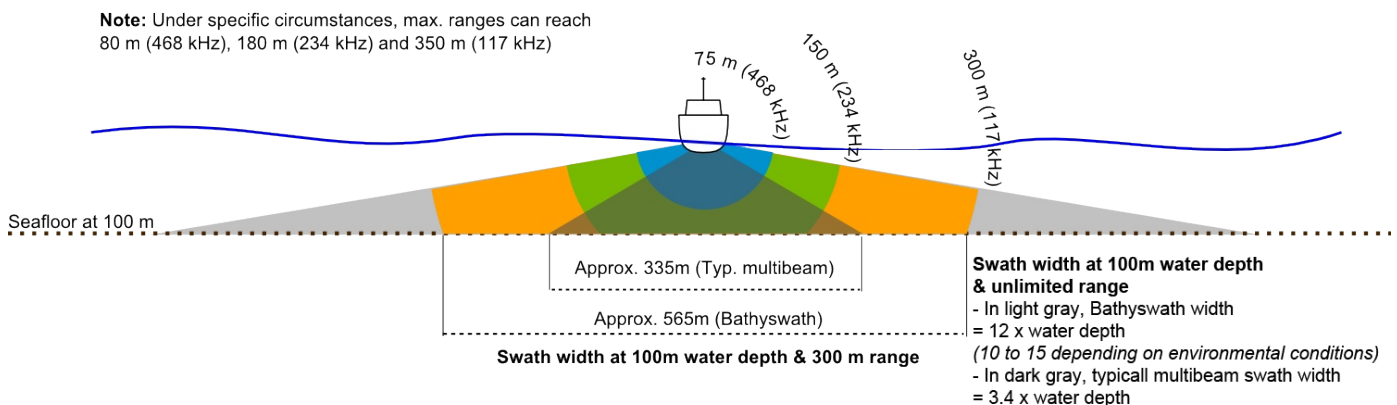


Bathyswath is derived from the established & respected SWATHplus system, now re-named as Bathyswath 1. ITER Systems continues to support & sell Bathyswath 1 systems.

PRODUCTIVITY

Bathyswath uses wide swath widths, this increases survey speeds significantly, especially in shallow water. It has 3 frequencies: 117, 234 or 468 kHz to be used respectively up to 350, 200 & 80m of water depth.

The US Geological Survey (USGS) said: "Operating swath of the bathymetric system ranged from 15 to 20 times water depth in in depths less than 15m".



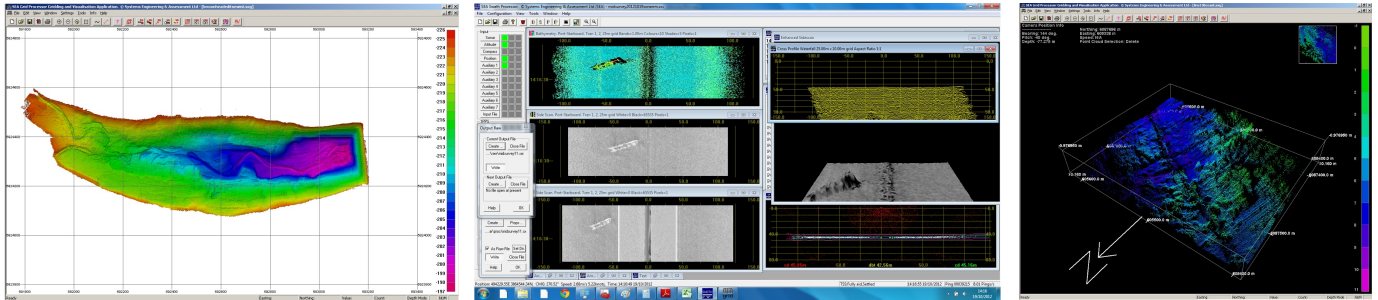
PRODUCT COMPARISON

| | Bathyswath 1 Standard | Bathyswath 1 OEM |
|---|--------------------------|---------------------|
| Transducers | 1 to 3 | 1 to 3 |
| Transducer extension cables | 1 to 3 | 1 to 3 (option) |
| Electronics unit | | |
| •Bathyswath electronics | Yes | Yes |
| •Standard Housing | Yes | No |
| •Splashproof Housing | Option | No |
| SWATH software; data acquisition, processing & 3D visualisation; unlimited licenses | Yes | Yes |
| Transducer mounting bracket | Yes | No |
| Rugged transit cases | Yes | No |
| 12 month return-to-base warranty | Yes | Yes |

**YOU WILL NOT FIND BETTER PRICE FOR THE SAME QUALITY
(IHO STANDARDS COMPLIANT, BATHYMETRY & SIDESCAN)**

SOFTWARE

Bathyswath data acquisition & processing software is included in system price but you can also interface to 3rd party software systems such as QINSy, SonarWiz, CARIS, Hypack, Fledermaus, Starfix & PDS2000.



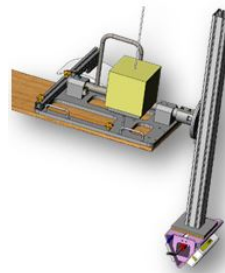
MOUNTS & SPLASHPROOF HOUSING (OPTIONAL)

2 types of mounts are proposed: A Universal Mounting Kit to allow deployment on vessel of opportunity and a Side Mounting Kit for installation on RIBs. Note: the Bathyswath system is supplied with a V-bracket for 2 or 3 transducers.

Splashproof Housing is an option for Bathyswath Standard.



Transducer Mounting Kit



Side Mounting Kit (for RIBs)



Splashproof Housing

APPLICATIONS

- Shallow water hydrographic survey
- Navigational charting
- Environmental monitoring
- Dredging operations
- River, harbour, lake & dam management
- Marine archaeology
- Wreck location
- Marine civil engineering inspection
- Pipeline & cable routeing survey & inspection
- Hull inspection
- Harbour security
- Military rapid environmental assessment

SHALLOW SURVEY QUALITY, VALUE, & EFFICIENCY FOR COMMERCIAL, SCIENTIFIC & MILITARY NEEDS

TECHNICAL SPECIFICATIONS

| | 117 kHz | 234 kHz | 468 kHz |
|-----------------------------------|----------------|----------------|----------------|
| Operational slant range (m) | 300 | 150 | 75 |
| Maximum slant range (m) | 350 | 200 | 80 |
| Minimum depth (m) | 0.3 | 0.2 | 0.1 |
| Measurement resolution limit (mm) | 12 | 6 | 3 |
| Resolution detection limit (mm) | 6 | 3 | 1.5 |
| Across track resolution (cm) | 5 | 2 | 1 |
| Beam width, azimuth (2-way) | 0.85° | 0.55° | 0.55° |
| Transmit pulse length (µs) | 17 to 8500 | 8.5 to 4300 | 4.3 to 2100 |
| Transducer dimensions (mm) | 235 x 550 x 90 | 160 x 350 x 60 | 100 x 215 x 42 |
| Transducer weight in air (kg) | 13 | 6 | 1 |
| Transducer weight in water (kg) | 1.6 | 0.9 | 0.1 |
| Max. cable length (m) | 20 | 20 | 15 |

BATHYSWATH

Bathyswath is a dedicated team comprised of the world's most experienced developers of interferometric sonar. Its products are direct descendants of the world's first commercially-available interferometric swath sonar system, which was later developed into SWATHplus. Until August 2012, ITER was the French distributor of Systems Engineering & Assessment Ltd. (SEA) for SWATHplus products. ITER Systems has now taken over all SWATHplus activity & renamed the system Bathyswath.



Bathyswath
www.bathyswath.com

sales@bathyswath.com
support@bathyswath.com

ITER Systems
310 impasse de la Tuilerie,
74410 Saint Jorioz, France

www.iter-systems.com
Registration number :
799 207 972 RCS Annecy

YOUR LOCAL BATHYSWATH REPRESENTATIVE